



WELCOME!

OPEN HOUSE

JUNE 1, 2017



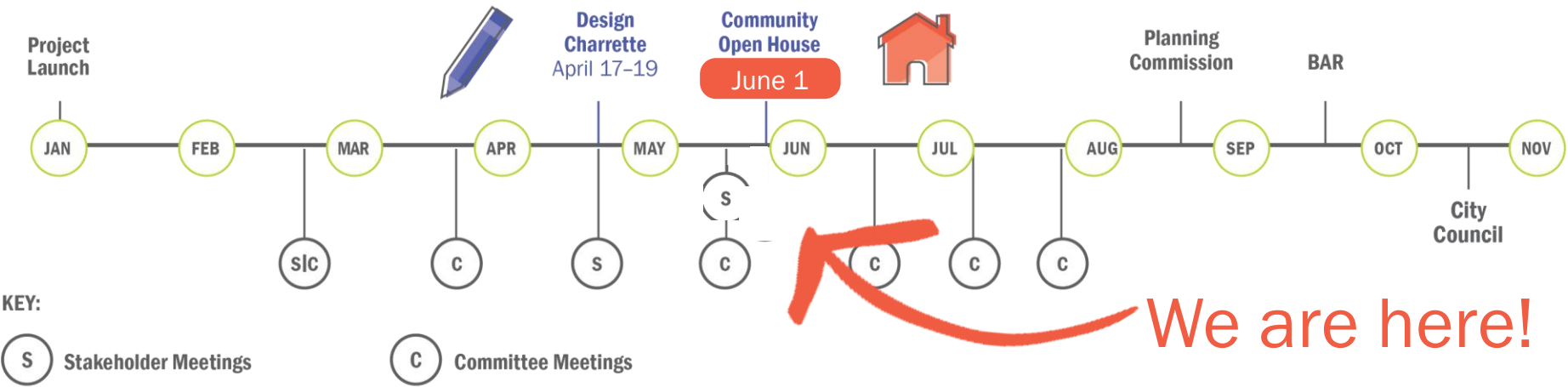
AGENDA

JUNE 1, 2017 6pm – 8pm

6:00 – 6:10	Introduction <ul style="list-style-type: none">• Program Objectives• Program Format
6:10 – 6:45	Presentation and Orientation to Information Stations <ul style="list-style-type: none">• Overall Process Update• Orientation to Design Information Stations
6:45 – 7:45	Open Discussion at Design Information Stations
7:45 – 8:00	Questions and Answers

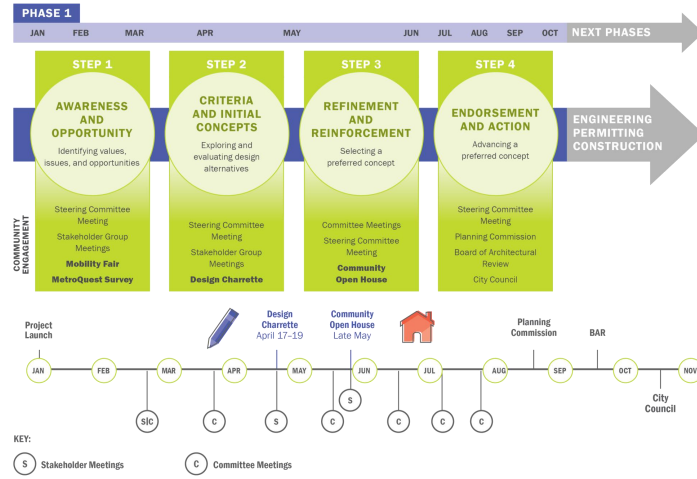
Introduction

Process/Schedule



Project Update

Process/Schedule



Next Steps

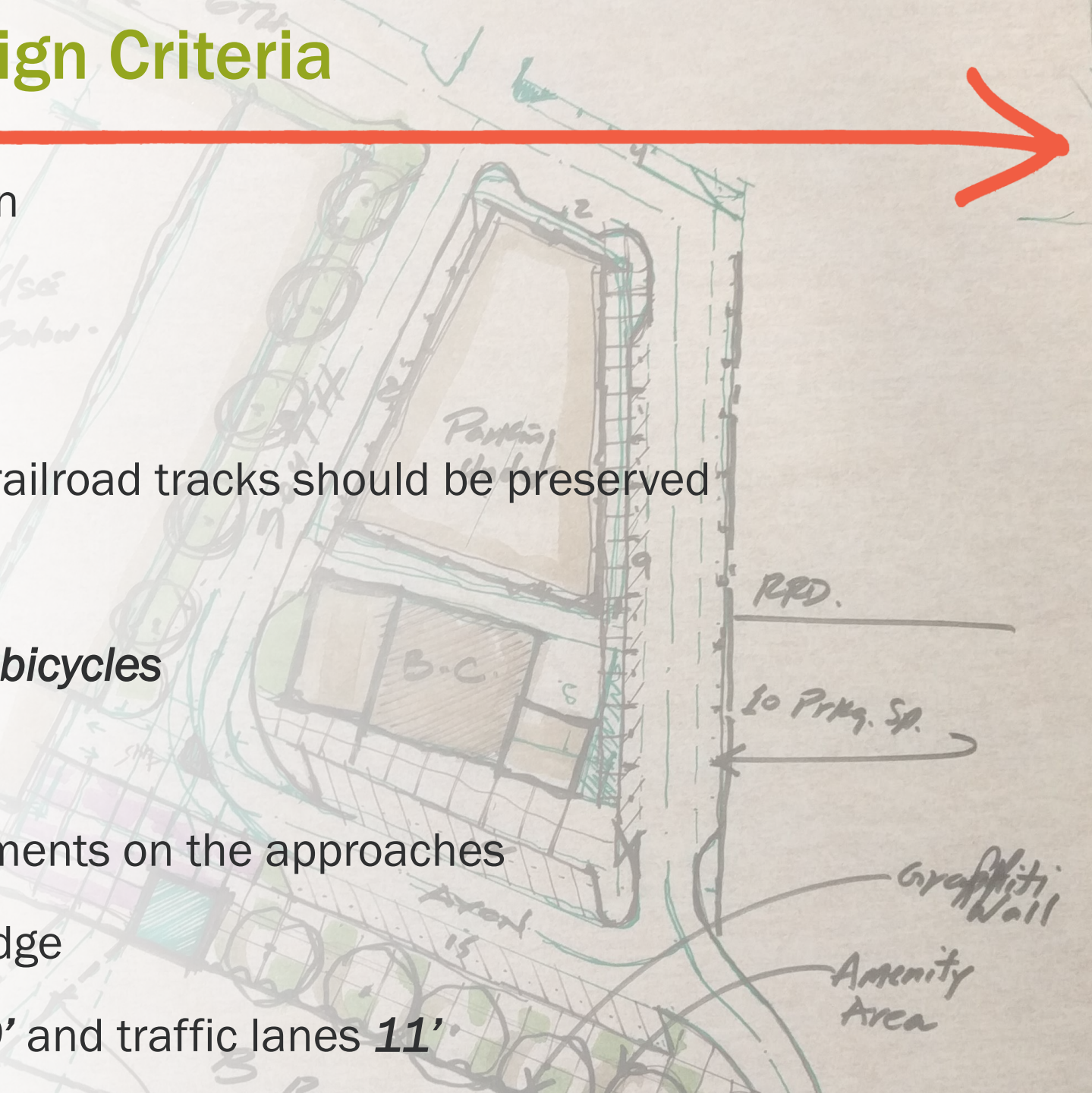
- Steering Committee and Technical Committee Meetings - June 14
- Planning Commission Meeting - August 8
- BAR Meeting - August 15
- Steering Committee and Technical Committee Meetings - August

Station #1

What We Heard

City Council Approved Design Criteria

- ❑ Bridge is the **gateway** into downtown
- ❑ Maintain 25 MPH **speed** limit
- ❑ **Two lanes** – one in each direction
- ❑ **Views** to the mountains and of the railroad tracks should be preserved
- ❑ **Innovative**, entertaining design
- ❑ **Separate pedestrian, vehicles, and bicycles**
- ❑ Reduce the **bridge length**
- ❑ **Enhance the landscape** design elements on the approaches
- ❑ **Accent lighting** to showcase the bridge
- ❑ Bike lanes **10'**, pedestrian lanes **10'** and traffic lanes **11'**



Outreach & Engagement

Since February 2017

2,500+

touch points

25,000+

individual data points

1,000+

written comments

Steering Committee Meetings

Small Stakeholder Group Meetings

Mobility Summit

MetroQuest Survey

Design Charrette

Belmontbridge.org

Key Takeaways

- Functional, **integrated** design with unique accents
- **Connectivity** to downtown and neighborhoods
- **Safety** for all modes
- Improved **approaches**
- **Maintain travel** for cars, bikes, and pedestrians during construction (**60'** minimum bridge width)
- **Short bridge** concept (mitigate parking loss)
- **Parking strategy** – during and post construction

Design Charrette Takeaways

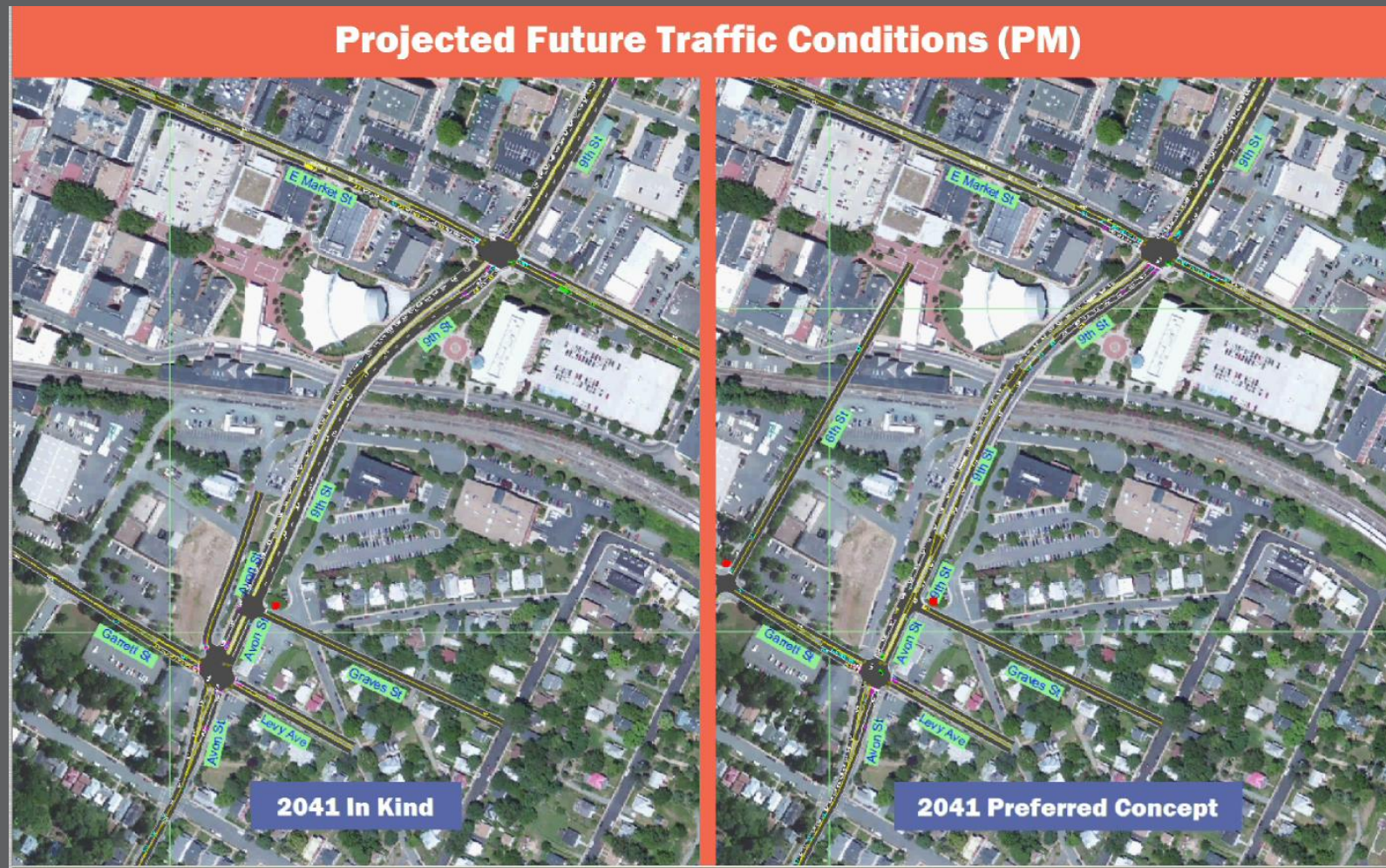
April 2017

- 
- ✓ Overall corridor approach: *New block structure*, closing Avon at Garrett, and creating new East-West public street at RRD property line
 - ✓ *Two-lane 62' bridge section* with a *protected bike lane* and wide sidewalks
 - ✓ *Modern / funky* design
 - ✓ *Enhanced landscape* elements on approaches
 - ✓ *Accent lighting* (not theatrical)
 - ✓ Study *vertical circulation on east and west sides north of tracks*
 - ✓ Interim / *shared parking solutions* (in cooperation with property owners)

Station #2

Traffic and Transportation Planning

Transportation *is* a system...

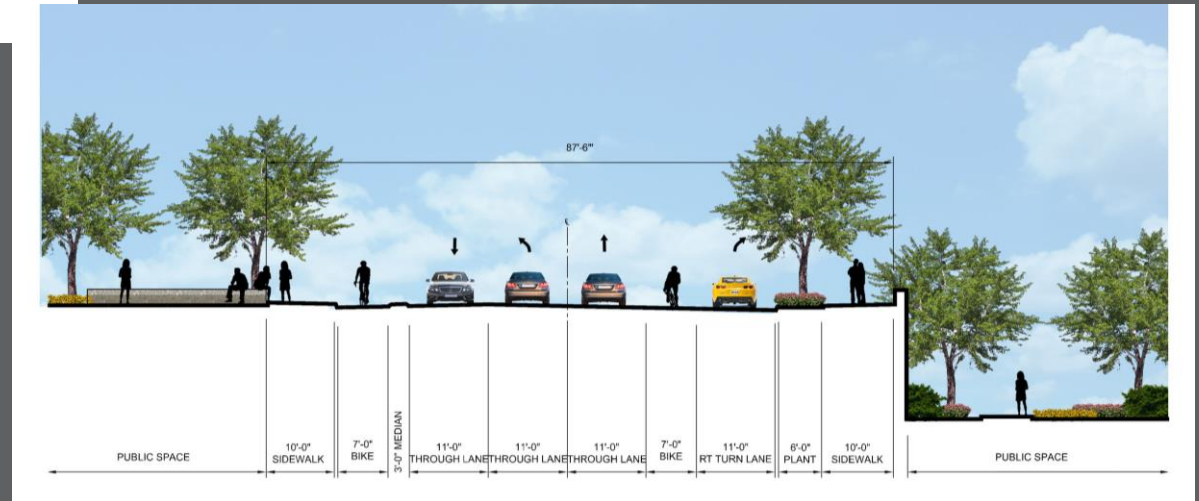
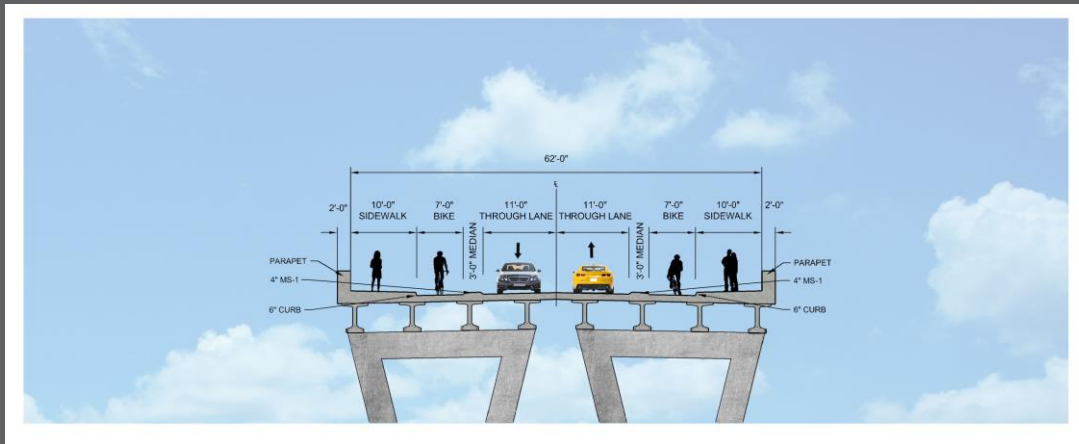
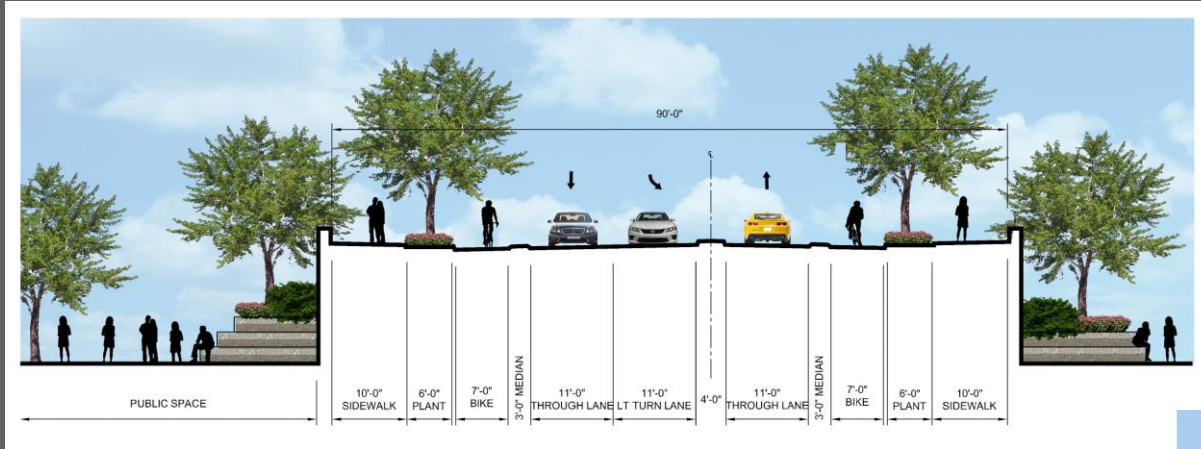


Station #3

Corridor Plan Concepts



Roadway Sections



Corridor Plans



PARKING TABULATIONS	
EXISTING	PROPOSED
Surface Lot	Surface Lot
South Street	South Street
Avon Street	Avon Street
South Street	South Street
Garrett Street	Garrett Street
Private Street	Private Street
East Side	East Side
TOTAL	TOTAL
120	132
Dedicated Railroad Parking	Dedicated Railroad Parking
10	10
Total Less Dedicated Railroad Parking	Total Less Dedicated Railroad Parking
110 spaces	122 spaces

Long-Term Development Opportunities

In-Scope Improvements Scenarios



PARKING TABULATIONS	
EXISTING	PROPOSED
Surface Lot	Surface Lot
South Street	South Street
Avon Street	Avon Street
East Side	East Side
TOTAL	TOTAL
103	73
Dedicated Railroad Parking	Dedicated Railroad Parking
10	10
Total Less Dedicated Railroad Parking	Total Less Dedicated Railroad Parking
93 spaces	63 spaces

Pedestrian Circulation

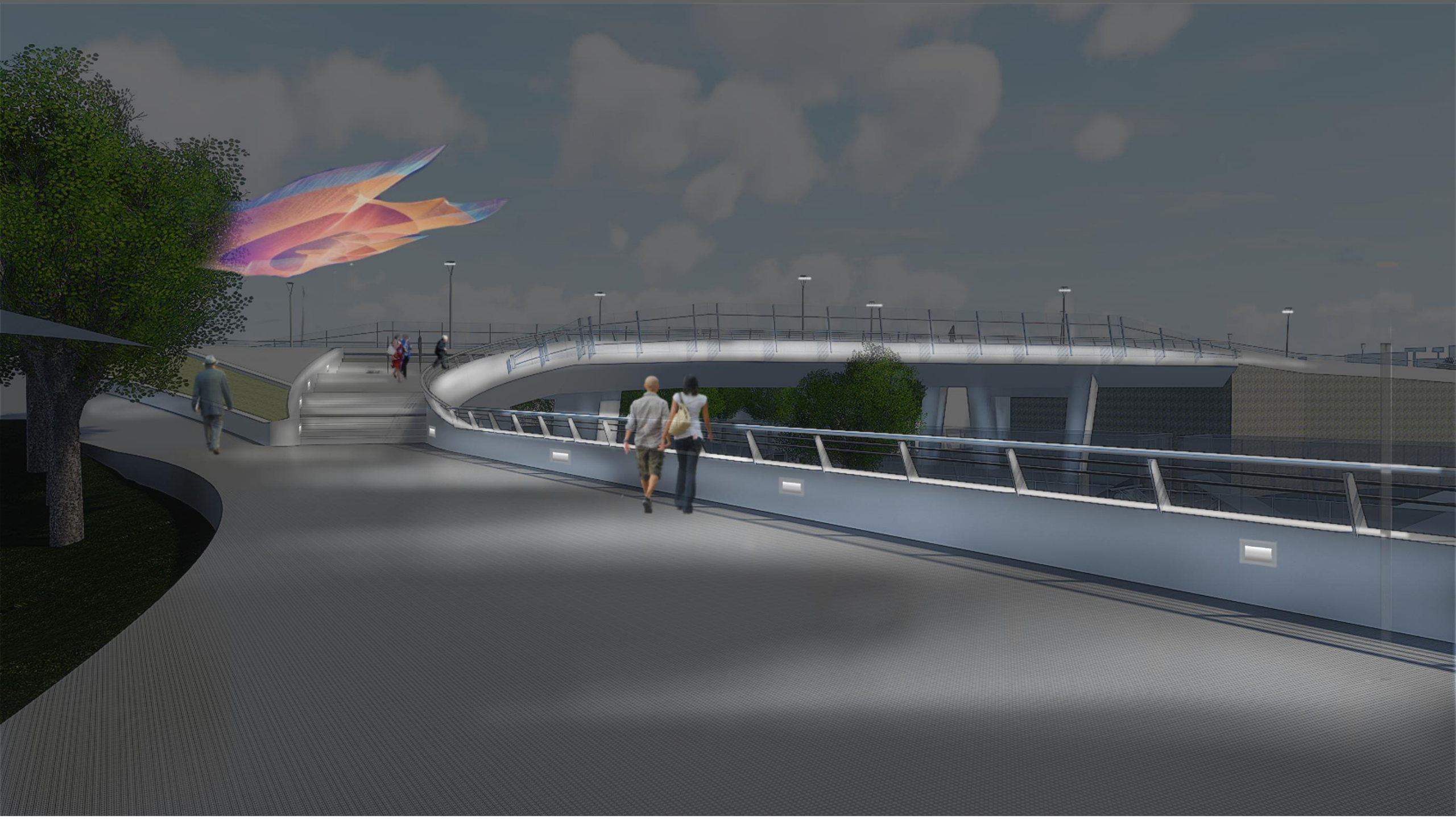


Station #4

Architecture and Design Themes









Thank you....

and let's talk some more!

