



WELCOME!

Steering Committee Meeting

JUNE 14, 2017



AGENDA

JUNE 14, 2017 6pm – 8pm

	<i>Presentation</i>	Project Updates <ul style="list-style-type: none">• Process and Schedule
	<i>Presentation</i>	Review Input from Open House and Survey
	<i>Discussion</i>	Conceptual Design Review and Comment
	<i>Public Comment</i>	
	<i>Action</i>	Endorsement of Preferred Concept
	<i>Discussion</i>	Next Steps <ul style="list-style-type: none">• Submit PC package on June 27• Submit BAR submittal package on August 1• PC Meeting on August 8• BAR Presentation August 15• SC/TC Meeting Series #5 August 16

Key Objectives

- Review feedback received
- Review conceptual design
- Obtain endorsement of preferred concept



The goal of this meeting is to obtain guidance, additional feedback, and endorsement, with any recommended changes, of a final preferred concept for submittal to PC and BAR.

Three Decisions

Pedestrian Circulation

*Crossing 9th Street
south of the railroad*

Graves Street Access

Turning movements

Vertical Circulation Concepts

*Movements from bridge to
Water Street north of railroad*

+

Recommended
Concept

=

Preferred
Concept

Project Updates

Process and Schedule/Next Steps

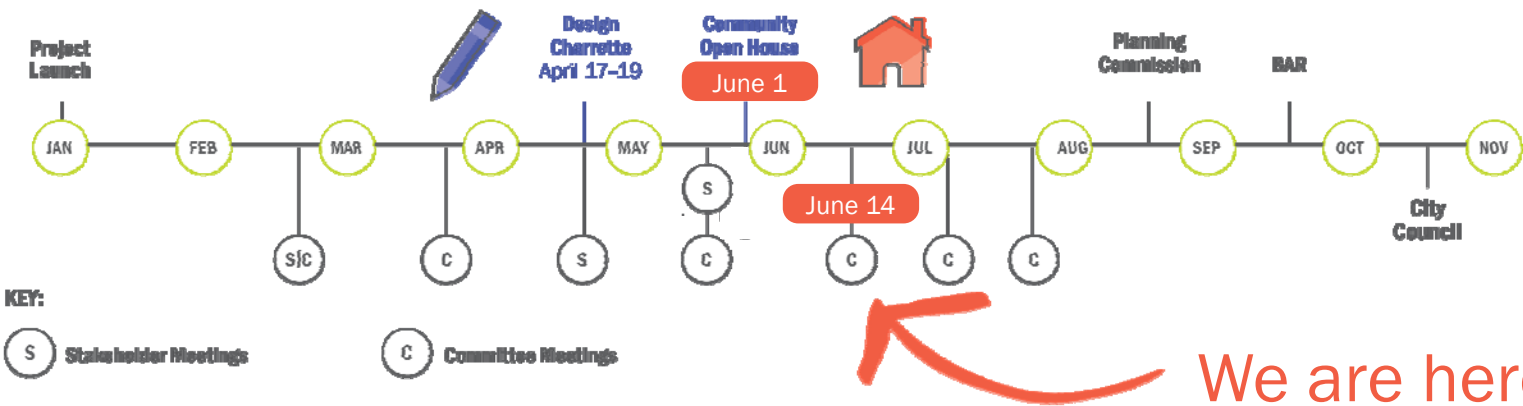


Process/Schedule



Next Steps

- Planning Commission Meeting *August 8*
- BAR Meeting *August 15*
- Steering Committee and Technical Committee Meetings *August*



Review Input from Open House and Survey



Open House Takeaways

June 1, 2017



- ✓ **Supported:** Overall Corridor Plan: closing Old Avon at Garrett
- ✓ **Supported:** Protected bike lane and wide sidewalks
- ✓ **Supported:** Minimal medians – enhanced perimeter landscape on approaches
- ✓ **Supported:** West Main Street light fixtures – supplemented lighting where needed
- ? **More Discussion:** Options for at-grade crosswalk and passageway under 9th Street
- ? **More Discussion:** Turning movements at Graves Street and 9th Street
- ? **More Discussion:** Stairs on east and west sides with mezzanine connection – **study ADA ramp options**

Conceptual Design Decisions



1

Pedestrian Circulation

Crossing 9th Street south of the railroad

2

Graves Street Access

Turning movements

3

Vertical Circulation Concepts

Movements from bridge to Water Street north of railroad

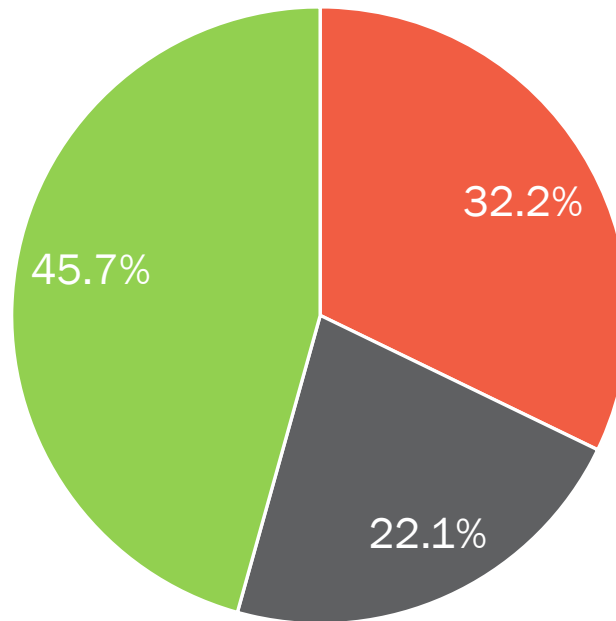


Pedestrian Circulation

Option 1.
Construct a pedestrian underpass

Option 2
Maintain existing at-grade crossing

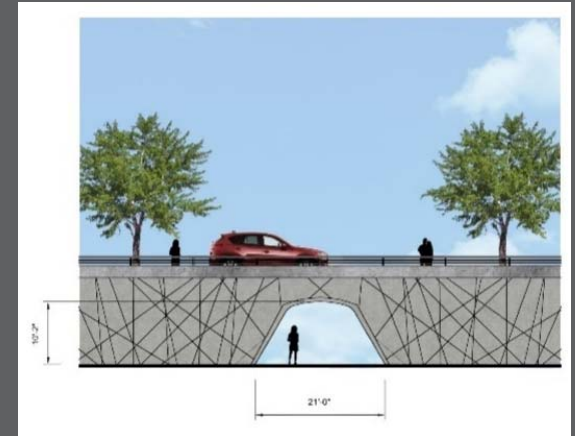
Option 3
Do both



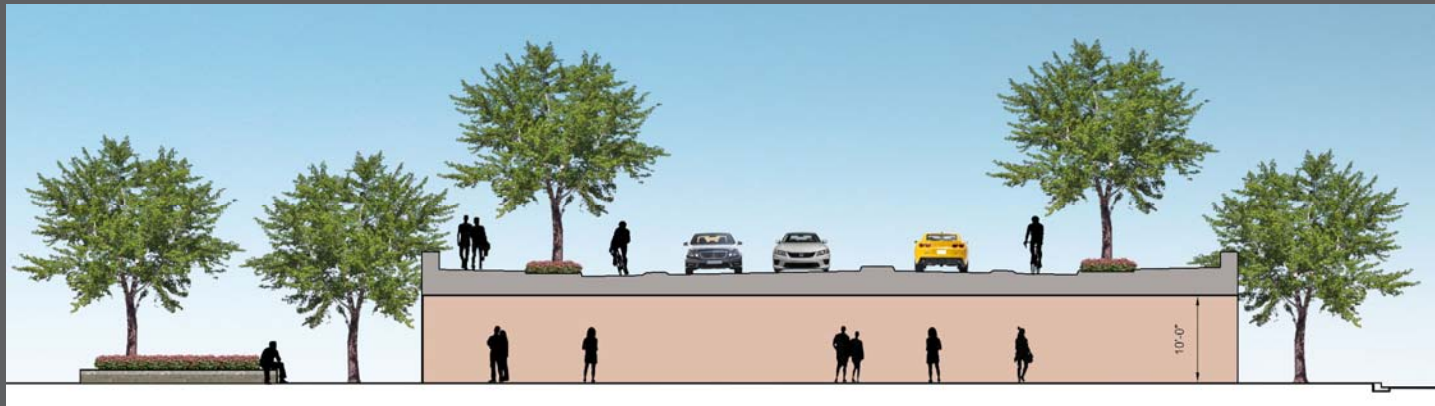
Pedestrian Circulation



Potential At
Grade Crossing
near Graves St.



Pedestrian Passageway Opening



View Looking North within passageway



Section
Key

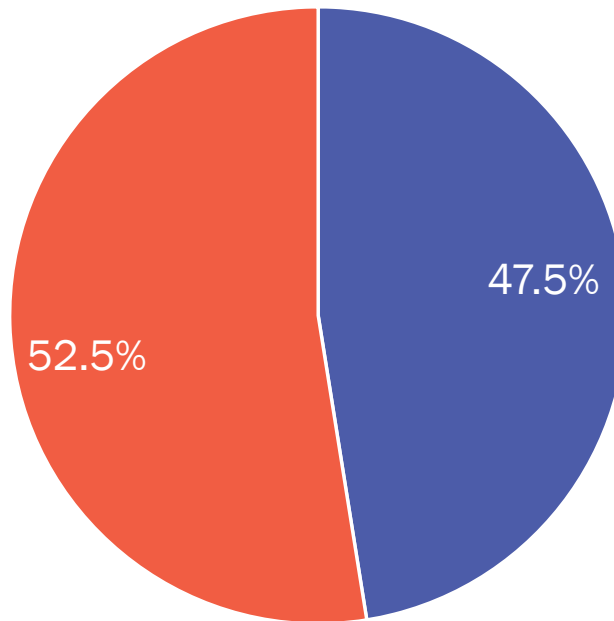
Graves Street Access

Alternative 1

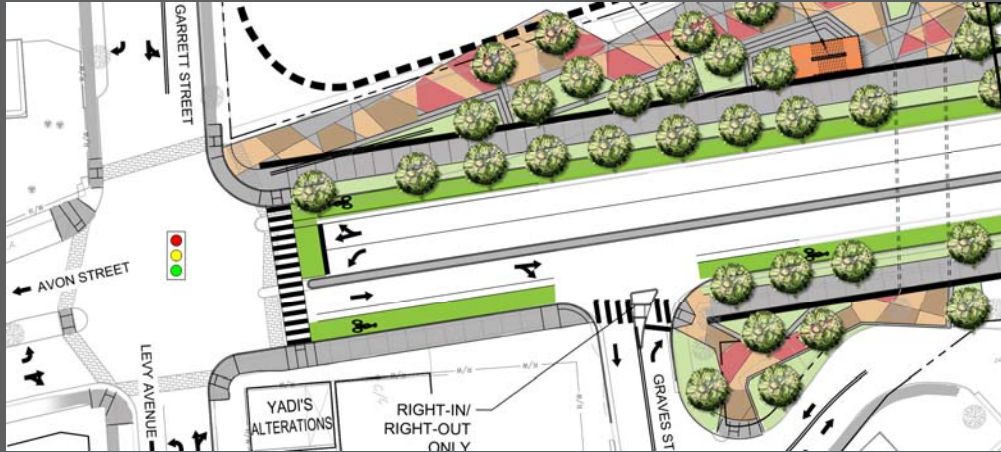
Restrict left turns from southbound 9th Street to Graves Street; Allow right turns onto and from Graves Street (but prohibit left turns from Graves Street to southbound 9th Street)

Alternative 1A

Allow left turns from southbound 9th Street to Graves Street; Allow right turns onto and from Graves Street (but prohibit left turns from Graves Street to southbound 9th Street)

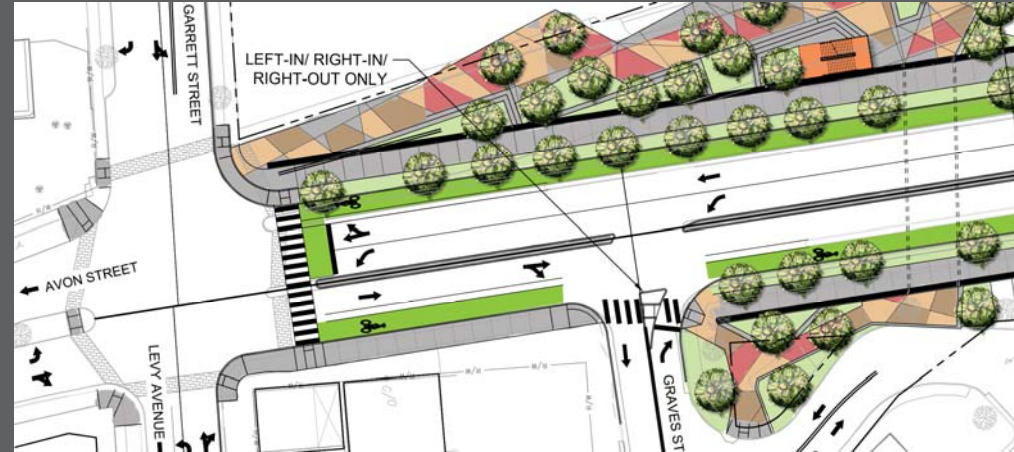


Graves St. Access



Alternative 1

This alternative includes a concrete median that prevents vehicles from turning onto Graves St. from southbound 9th St. Vehicles also are permitted to turn right in and out of Graves St. Vehicles cannot turn left from Graves St.



Alternative 1A

This alternative allows vehicles to turn left onto Graves St. from southbound 9th St. Vehicles are also permitted to turn right in and out of Graves St. Vehicles cannot turn left from Graves St.

Vertical Circulation Concepts

Concept 1

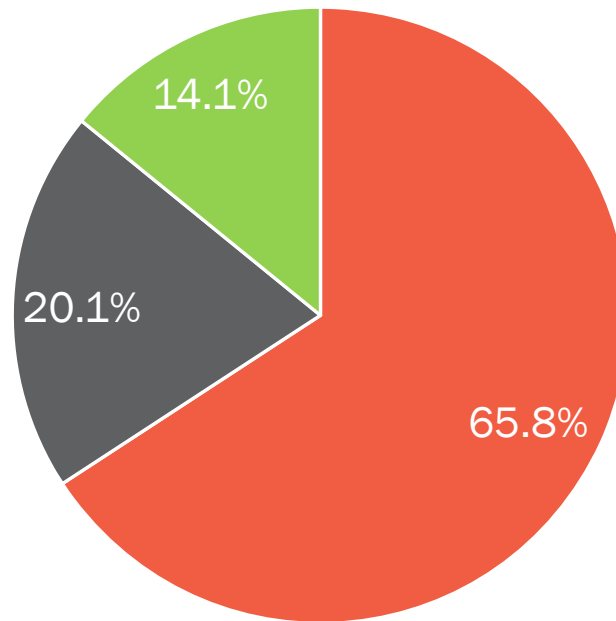
Stairs on east and west side with a mezzanine connection between 9th Street and Water Street

Concept 2

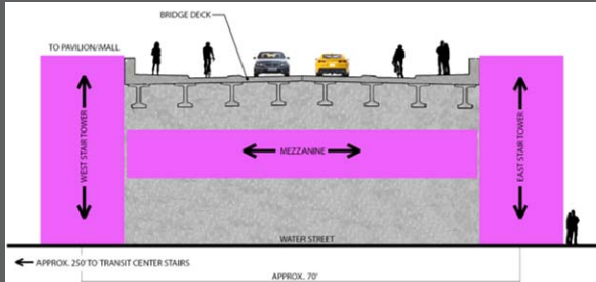
Stairs on east and west side (no mezzanine connection)

Concept 3

Stairs on east side with a mezzanine connection between 9th Street and Water Street. No west side stairs to Water Street.

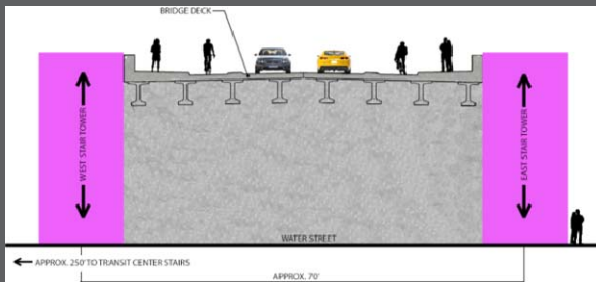


Vertical Circulation



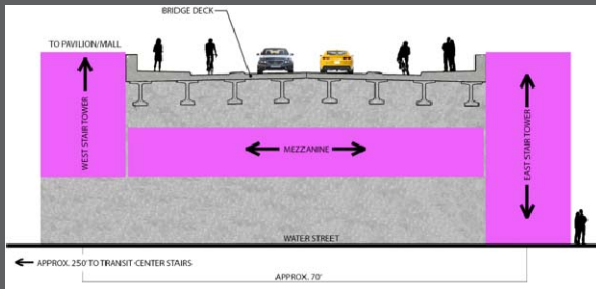
Option 1 – Stairs on east side and west side with Mezzanine connection

- East and West stairs to Water St.
- Mezzanine connection to west side stairs



Option 2 – Stairs on east side and west side (NO Mezzanine connection)

- East and West stairs to Water St.

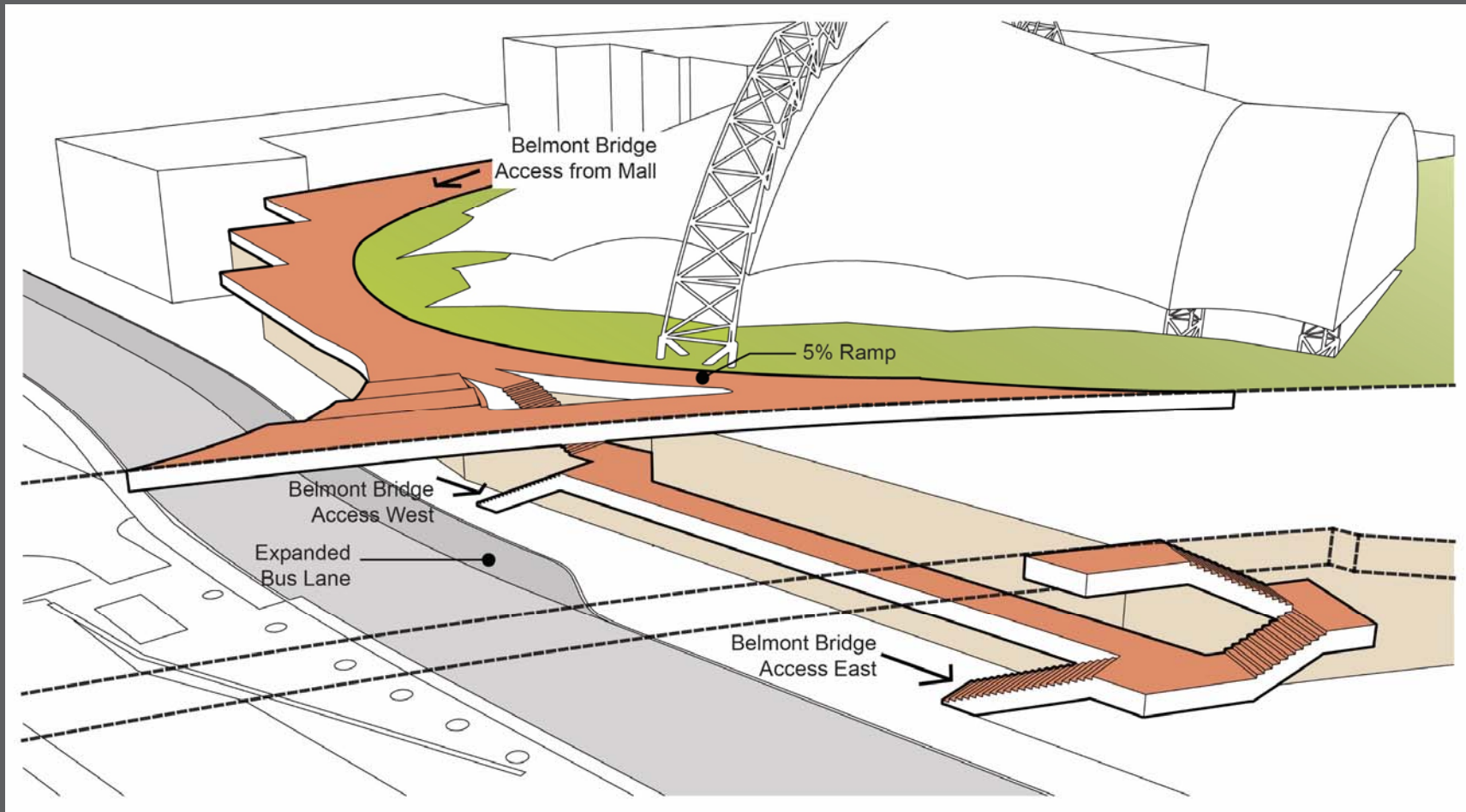


Option 3 – Stairs on east side and with Mezzanine connection

- East and West stairs to Water St.
- Mezzanine connection to West stairs

VIEW LOOKING NORTH FROM WATER ST

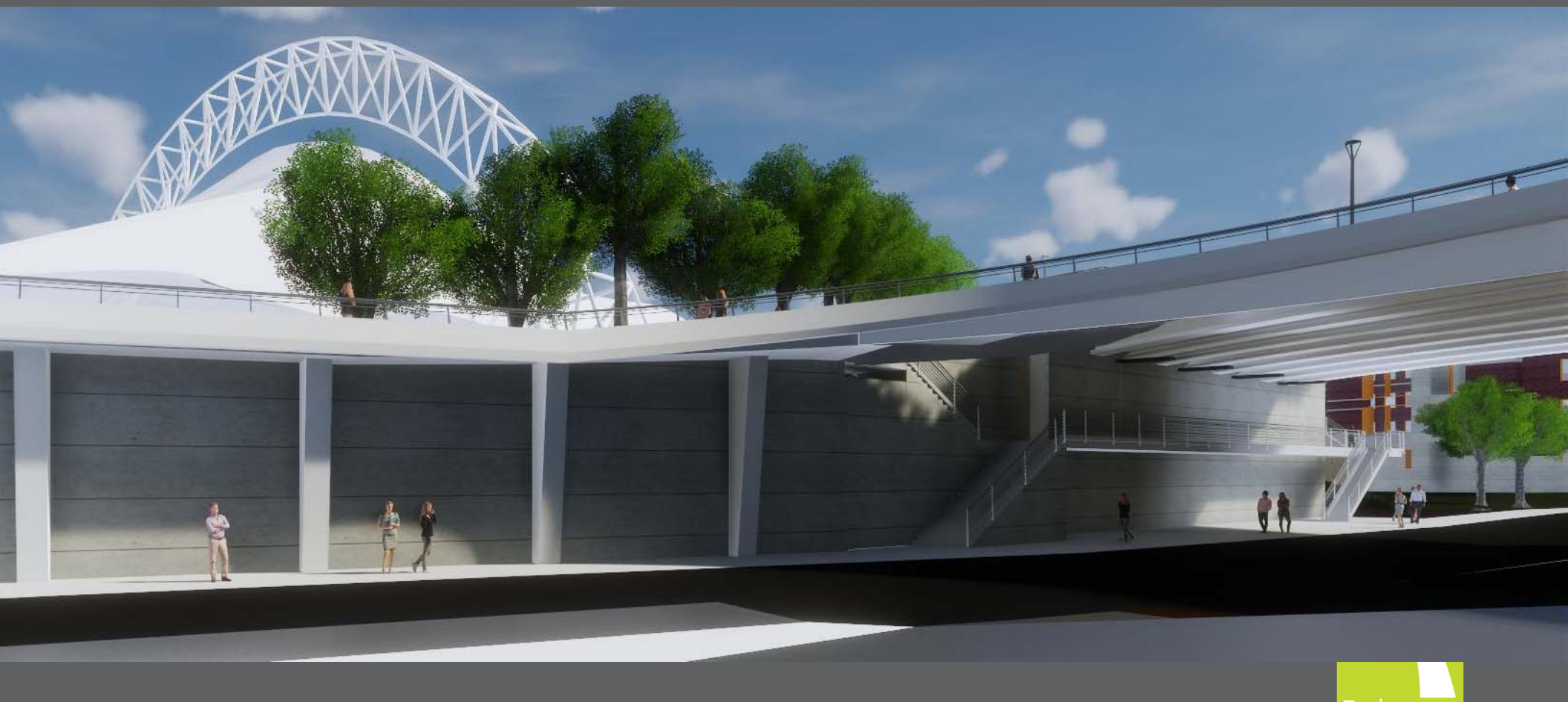
Vertical Circulation



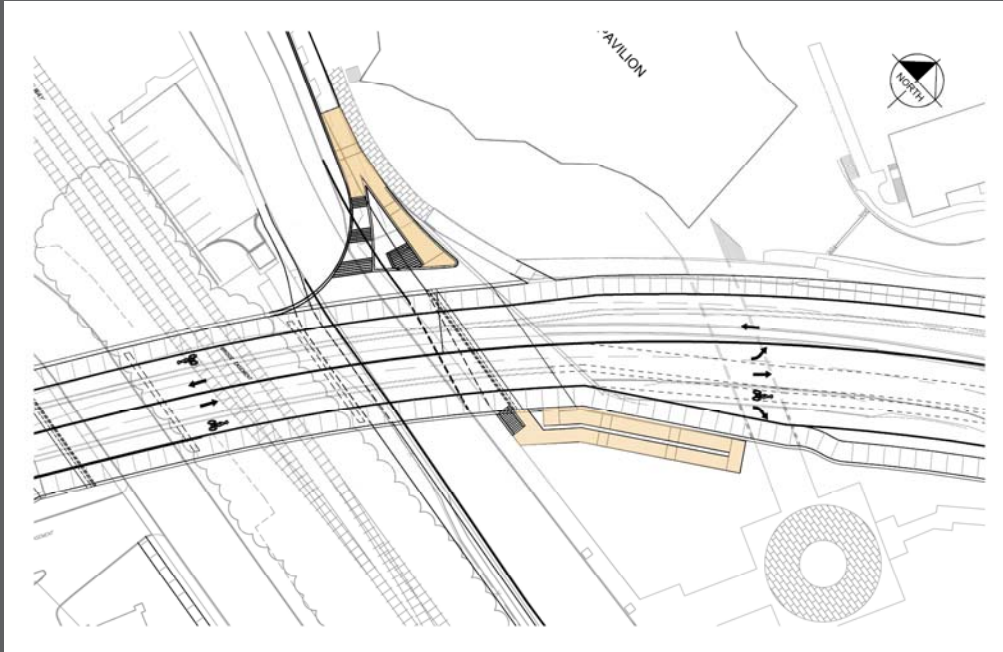
Vertical Circulation

North Abutment

Preferred: Central and West Stairs w/ Mezz



Vertical Circulation



ADA Ramp to Mezzanine

- 215 Linear Feet of Ramp
- Requires 2,200 SF of ROW Purchase
- Would be necessary to replace the Water St. retaining wall



ADA Ramp from 9th St. to Water St.

- 440 Linear Feet of Ramp
- Requires 4,000 SF of ROW Purchase

Conceptual Design Decisions – Questions?



1

Pedestrian Circulation

Crossing 9th Street south of the railroad

2

Graves Street Access

Turning movements

3

Vertical Circulation Concepts

Movements from bridge to Water Street north of railroad



Concept Design Review and Comment

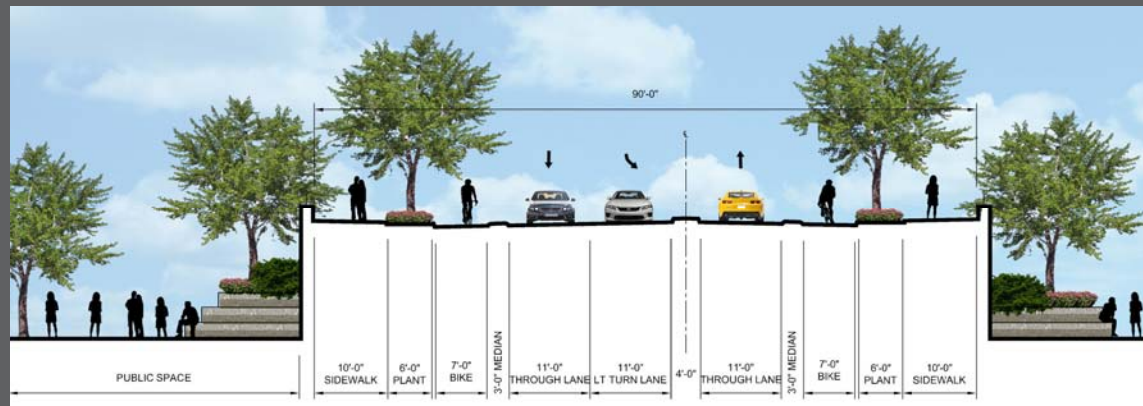
Updated Images



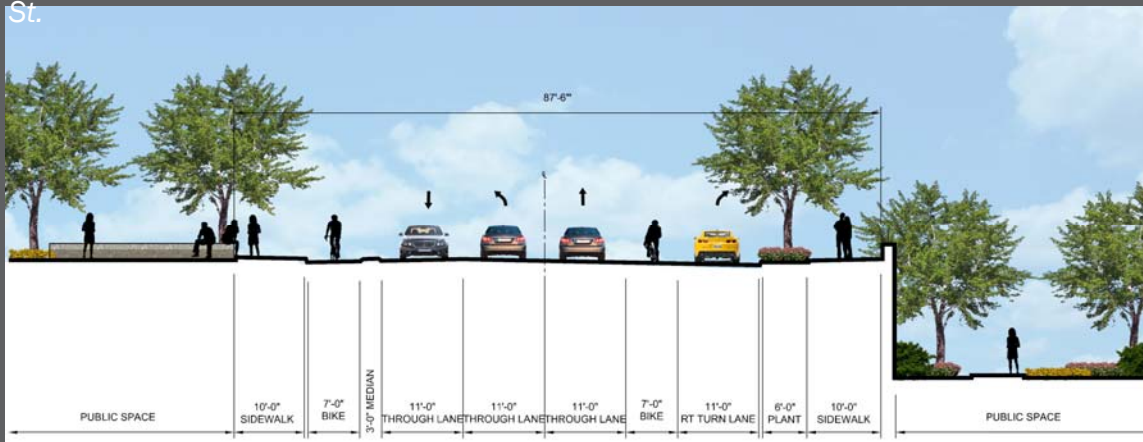
Corridor Plan



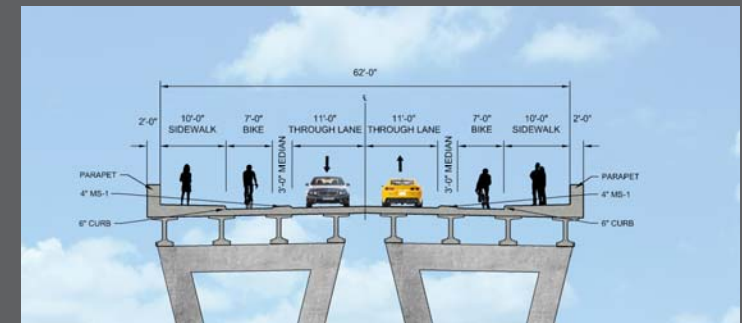
Roadway Sections



Looking North on 9th St. from Graves St.



Looking North on 9th St. from North of Bridge



Looking North on 9th St. on Belmont Bridge

Vertical Circulation

North Abutment

Preferred: Central and West Stairs w/ Mezz

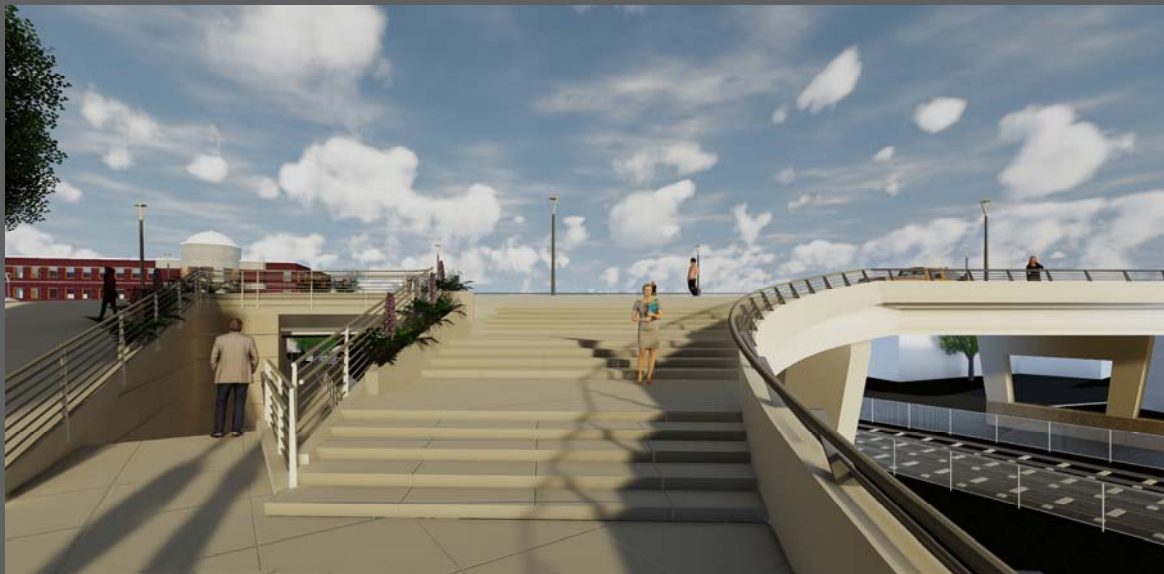


Rendering – Aerial Looking West

Vertical Circulation

North Abutment

Preferred: Central and West Stairs w/ Mezz



Renderings - Looking East to Bridge



Vertical Circulation

North Abutment

Preferred: Central and West Stairs w/ Mezz



Rendering – Water Street looking West

Piers

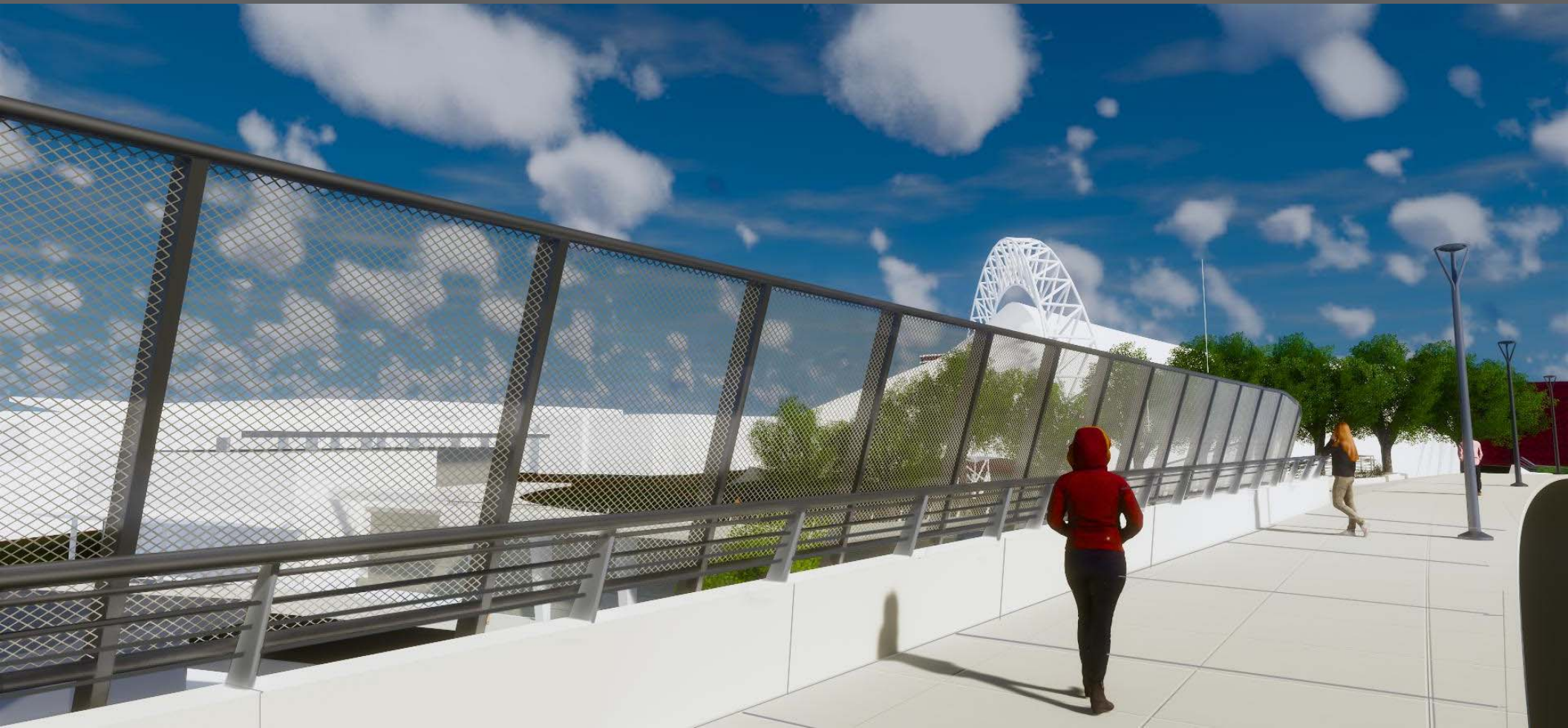


Rendering – Looking Southeast from Water Street

Railroad Fencing



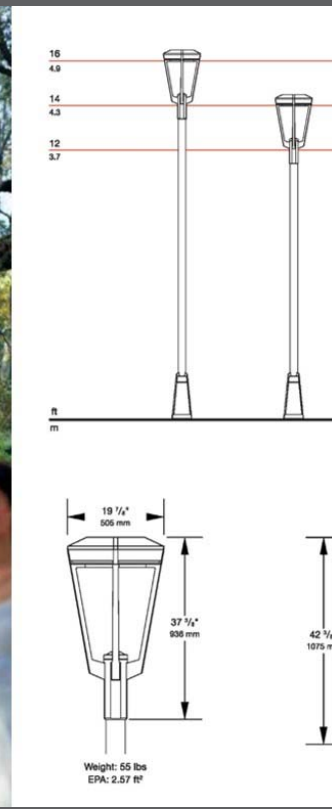
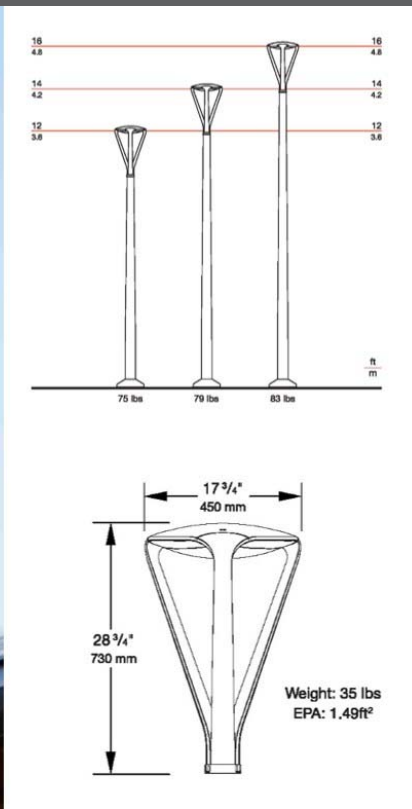
Railroad Fencing



Lighting

Pedestrian Walkway

Lighting Types



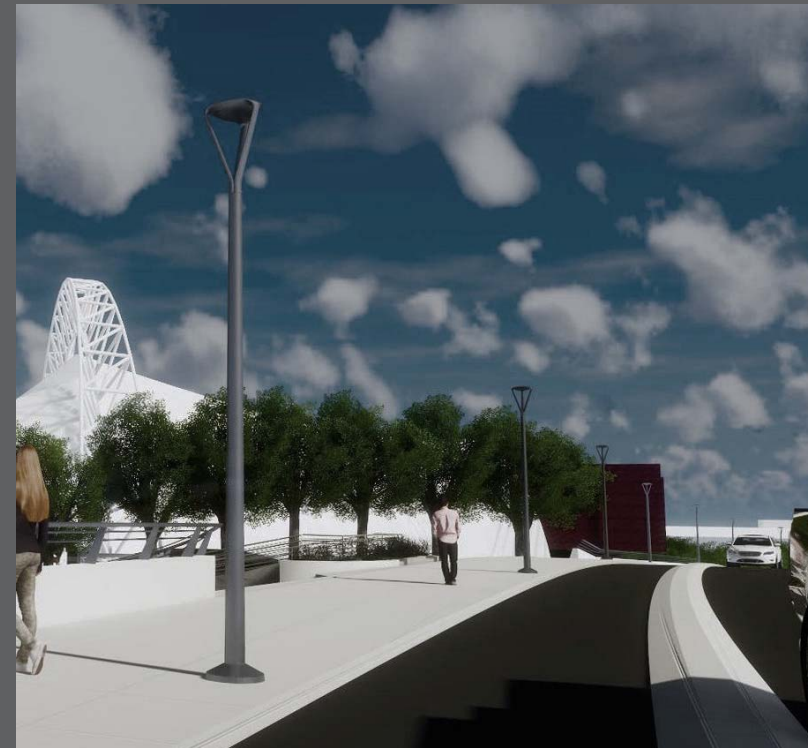
Landscape Forms FGP Pedestrian Light

Landscape Forms Ashbery Pedestrian Light

Lighting

Pedestrian Walkway

Perspective Views



Landscape Forms FGP Pedestrian Light

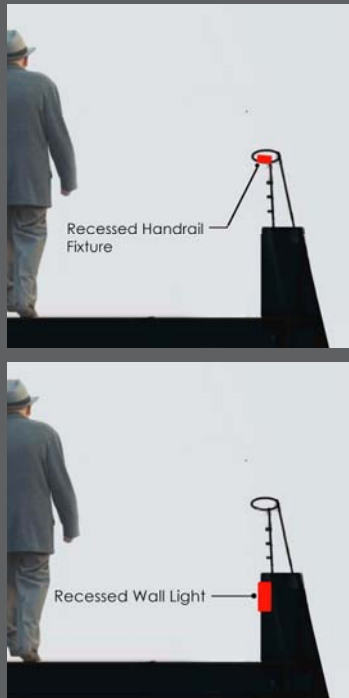
Lighting

Site and Accent

Lighting Types



Recessed Wall Fixture at Parapet



Recessed Handrail Fixture

Lighting

Site and Accent

Perspective Views



BELMONT
BRIDGE

Lighting

Site and Accent

Perspective Views



DEMONT
BRIDGE

Lighting

Site and Accent

Perspective Views

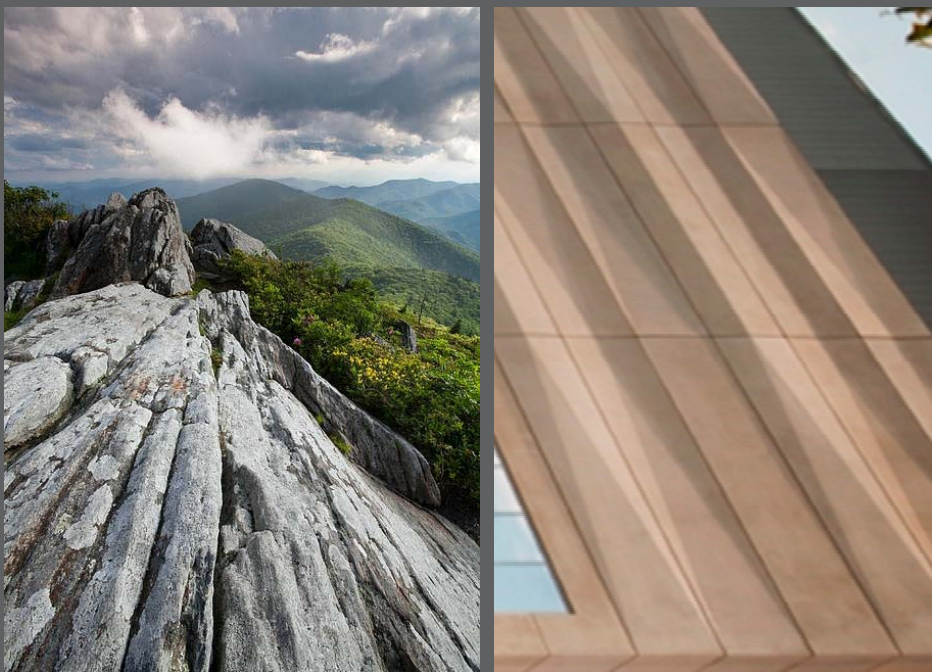


BRIDGE

Walls

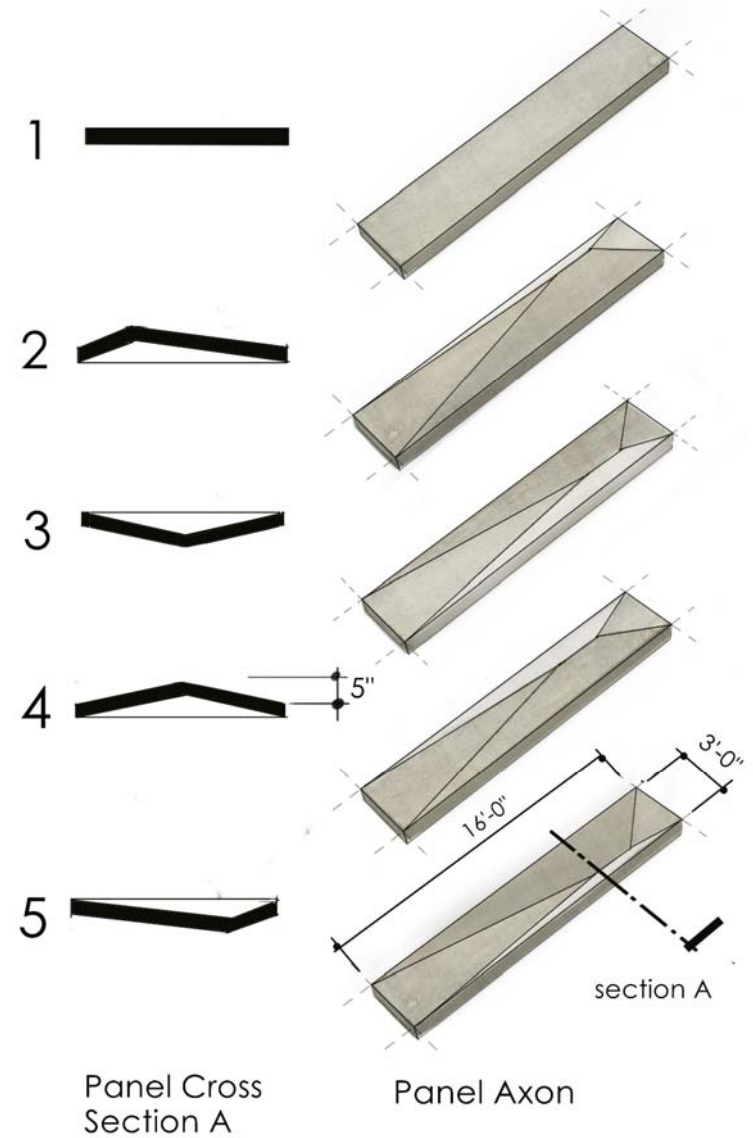
Formed Precast

Precast Concrete: Modular Panel System



Blue Ridge Mountain Outcropping

Intermittent Shadows Produced by Convex /Concave Faceted Panels



Panel Cross
Section A

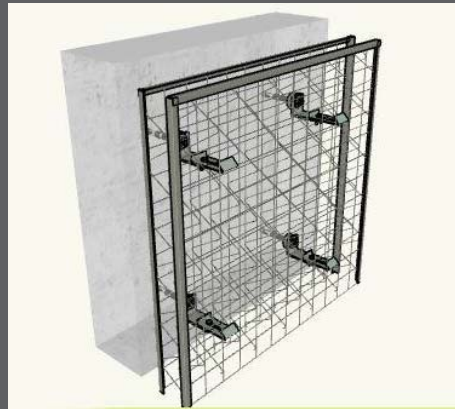
Panel Axon

Walls

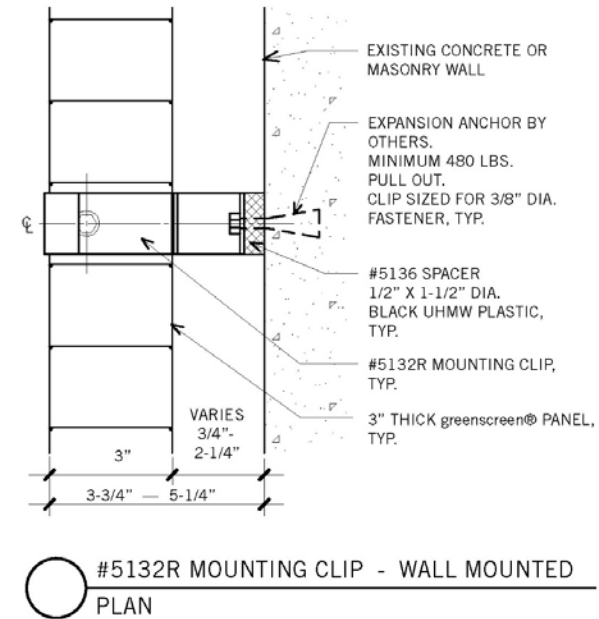
Green Screen



Trellis Panel mtd. to Masonry Wall



Trellis Panel: 3' - 4' module



Precast mounting Detail

Walls: North Abutment



South Elevation

Walls: North Abutment



Perspective from South

Walls: South Abutment



West Elevation



West Elevation - Typical Components

- Flat and Beveled Modular Precast Panels
- 3' modular Green Screen Panels
- Location for Mural or Graffiti



West Elevation @ Tunnel

Walls: South Abutment



East Elevation



East Elevation Elevation Tunnel Access

- Flat and Beveled Modular Precast Panels
- 3' modular Green Screen Panels
- Location for Mural or Graffiti



East Elevation @ Tunnel

Walls: South Abutment



Perspective from Southwest

Public Comment



Endorsement of Preferred Concept



Conceptual Design Decisions



1

Pedestrian Circulation

Crossing 9th Street south of the railroad

2

Graves Street Access

Turning movements

3

Vertical Circulation Concepts

Movements from bridge to Water Street north of railroad

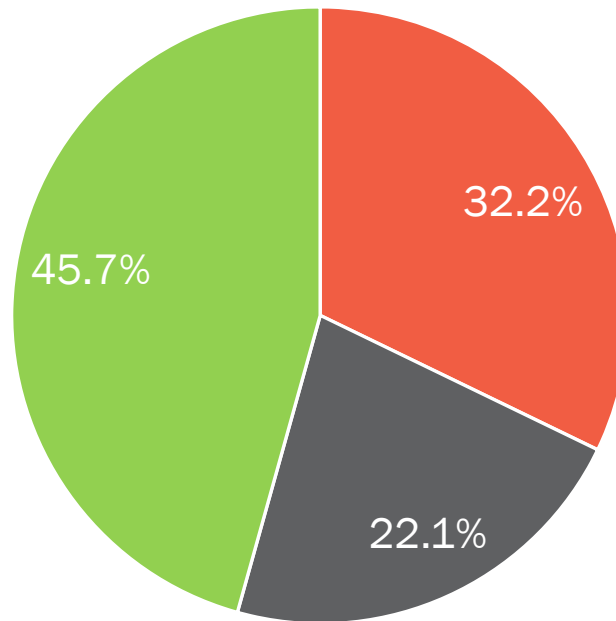


Pedestrian Circulation – SC Direction

Option 1.
Construct a pedestrian underpass

Option 2
Maintain existing at-grade crossing

Option 3
Do both



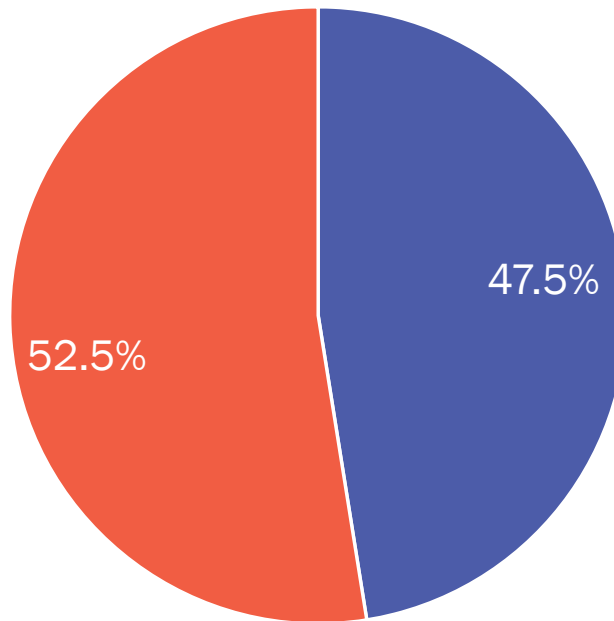
Graves Street Access – SC Direction

Alternative 1

Restrict left turns from southbound 9th Street to Graves Street; Allow right turns onto and from Graves Street (but prohibit left turns from Graves Street to southbound 9th Street)

Alternative 1A

Allow left turns from southbound 9th Street to Graves Street; Allow right turns onto and from Graves Street (but prohibit left turns from Graves Street to southbound 9th Street)



Vertical Circulation Concepts – SC Direction

Concept 1

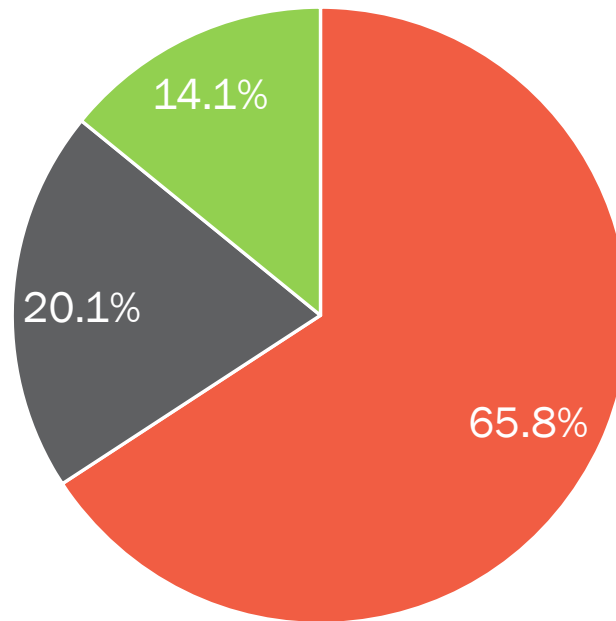
Stairs on east and west side with a mezzanine connection between 9th Street and Water Street

Concept 2

Stairs on east and west side (no mezzanine connection)

Concept 3

Stairs on east side with a mezzanine connection between 9th Street and Water Street. No west side stairs to Water Street.





Thank you....

